

# EVX

## Explosion Relief Valves

### Application: Engine Protection

#### General Description

The Explosion Relief Valve EVX is a reusable, flameless venting device, which is designed for the protection of personnel and equipment in case of oil mist or gas explosions in the crankcase of gas-, diesel- or dual-fuel engines. In the event of an explosion, the venting device opens by lifting the valve plate, and directs the vented explosion through the flame arrester, preventing flames from being expelled to the surrounding areas. The relief valve type EVX is equipped with a conical spring, immediately after the pressure event, the valve plate closes and resets airtight.

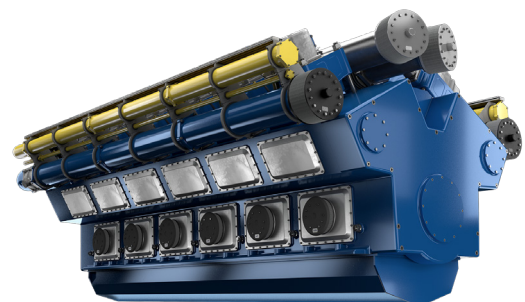
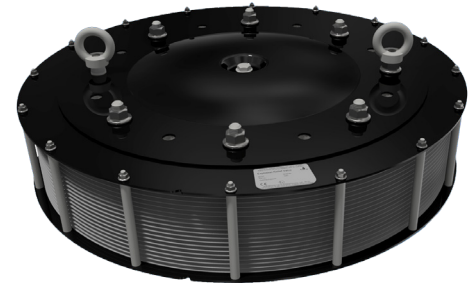
#### Key Features

- Integrated counter flange gasket
- No flame escape
- New, revolutionary sealing technology
- No air inrush thanks to quick opening and airtight closing
- Zero-leakage design - absolute tightness after opening & closing action
- Significantly lower gas exhaust temperatures
- Outstanding venting efficiency
- Type approved by all major IACS members

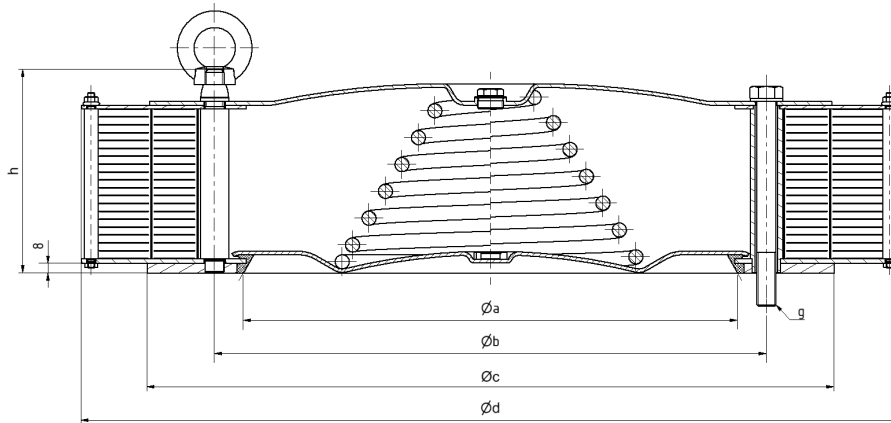
#### Application

Explosions can occur within the crankcases of combustion engines, as well as in large compressors, gearboxes, and transmissions. The movement of internal components can cause oil to form a mist or cloud within these confined spaces. In gas-fired or dual-fuel engines, unburned gas may also escape into the crankcase or other enclosed areas, further increasing the risk of explosion.

To mitigate equipment damage from overpressure and flame propagation—and to enhance personnel safety—the use of relief valves has proven to be an effective protective measure.



## Technical Data



Type	Relief area [cm <sup>2</sup> ]	Dimensions					Connection		Approx. Weight [kg]
		a [mm]	b [mm]	c [mm]	d [mm]	h [mm]	No. Bolts	g Thread	
266EVX	499	267	302	409	506	131	6	M12 or 1/2"	39
320EVX	732	320	355	462	573	137	6	M12 or 1/2"	53
345EVX	829	340	390	503	615	148.5	6	M16 or 5/8"	62
420EVX	1,260	415	465	579	690	171.5	8	M16 or 5/8"	84
480EVX	1,665	475	530	644	755	195.5	8	M16 or 5/8"	106
565EVX	2,300	561	615	735	840	218	12	M16 or 5/8"	157
645EVX	2,990	636	700	855	925	226	12	M16 or 5/8"	181
735EVX	3,905	726	795	912	1020	292	12	M16 or 5/8"	242

\*Delivery scope does not include bolts required for mounting.

## Additional Notes

- For sizes 480, 565, 645 and 735EVX hinge version is available
- All standard range components are made of carbon steel. The cover plate, valve plate, seat and bolts are additionally coated.
- The opening pressure is 0.05bar +/- 20%.
- For valve data see product label on the cover.

## Contact Information

### Europe, UK, Africa & Middle East:

HOERBIGER Wien  
T: +43 1 22440 2290  
Sales.ev@hoerbiger.com

### China:

HOERBIGER (Shanghai) Co., Ltd.  
Tel: 0086-21 6485 0855  
info-cn-safety@hoerbiger.com

### North & South America:

IEP Technologies  
T: +1413.896.1485  
info@ieptechnologies.com

### Japan:

HOERBIGER NIPPON K.K.  
T +81 476-37-3762  
info-hnkk-oem@hoerbiger.com

### Korea:

HOERBIGER Korea Ltd.  
T: +82-2-431-5867  
info-hsk@hoerbiger.com



HOERBIGER Wien GmbH  
Seestadtstraße 25, 1220  
Vienna, Austria  
Tel.: +43 1 22440 2290  
E-mail: sales.ev@hoerbiger.com  
www.hoerbiger.com